



**WARNING**

**IMPORTANT:** Read and follow these instructions before installing or maintaining this product.

Risk of Electrical Shock! Disconnect power at fuse or circuit breaker before installing or servicing.

Installation and servicing to be done by a certified electrician.

Incorrect wiring will result in irreparable damage to LED and power supply.

Do not energize the LED Engine until the protective packaging has been removed.

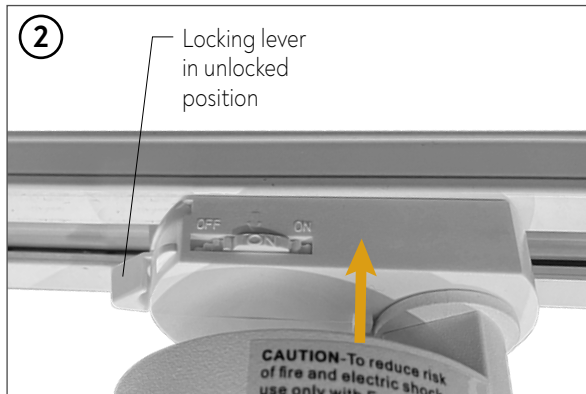
Do not touch the yellow surface of the LED as it may damage the light engine.

**SAFETY:** When using electrical equipment, basic safety precautions should always be followed, including the following:

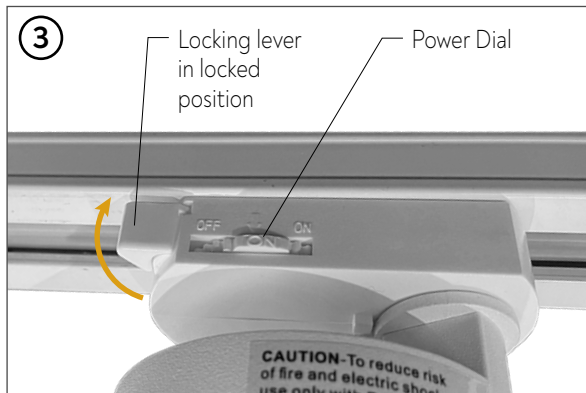
1. This unit is for track mounting only. Do not use in hazardous locations nor near gas or electric heaters.
2. Do not use this equipment for other than the intended use.
3. Install only in accordance with National Electrical Code and local regulatory agencies' requirements.



Install 3 wire, 1 circuit track (sold separately) according to manufacturer's instructions. Compatible with Halo track system.



Ensure line voltage to the track is powered off. Insert the contact assembly into the track with the locking lever in the unlocked position.



Move the locking lever to the locked position to secure tracklight to the track and power dial to the ON position.

Power dial can be used to turn on/off individual tracklights.

